



## Azimut 48 Fly

**Year:** 2012

---

**Price:** EUR 450,000 Tax Not Paid

---

**Location:** Mallorca

---

**Hull Material:** Fibreglass

---

**Fuel:** Diesel

---

**Cruising Speed:** 25 knots

---

**Condition:** Used

A beautifully maintained example of the renowned Italian shipyard's prestige and craftsmanship, the Azimut 48 embodies contemporary elegance, sophistication and unique presence on the water.

### Exterior Design

- A refined metallic blue hull and crisp white superstructure combined with a timeless silhouette.
- Teak decking adorns the cockpit and flybridge access steps, while non-skid white surfaces ensure comfort even on the hottest summer days.

### Interior Refinement

- The interior exudes a bright, modern atmosphere with natural beige carpets, beige leather upholstery, and leather sofas complemented by abundant natural wood accents and natural light.
- Accommodates up to 6 guests in 3 well-appointed cabins, with the option for 2 additional guests on the convertible sofa-bed in the salon.

### Performance & Power

- Powered by twin Cummins QSC 8.3 600HP engines (1200HP combined), she cruises effortlessly at 20 knots and reaches a top speed of 30 knots.

### Key Features

- Exceptionally low engine hours
- Williams Jet Tender 285
- New teak in bathing platform, cockpit, and flybridge steps (2025)
- Hydraulic platform
- Starlink high-speed internet
- Side Power bow thruster
- Hydraulic passerelle

### Dimensions

---

LOA: 14.9 m

Beam: 4.5 m

### Engines

---

Engine Make: Cummins QSC8.3

Primary Engines: Inboard

Power: 441.3kW

Drive Type: Direct Drive

Propeller Type: 4 blade

### Tankage

---

Fuel Tanks #: 2000 l

Fresh Water Tanks #: 590 l

Holding Tanks #: 200 l

## Accommodation and Layout

---

### Azimut 48: Exquisite Living Spaces

#### Flybridge

---

A spectacular social hub, the flybridge features a large sunbathing pad adjacent to the pilot seat and a spacious U-shaped sofa with a central table—perfect for dining, relaxing, or entertaining with unobstructed 360° views. A generous bimini provides shade during peak sun hours.

#### Interior: Luxury & Comfort

#### Cockpit

---

Accessed via the hydraulic passerelle, the teak cockpit offers seamless movement to the flybridge, interior, foredeck, bathing platform, stern lazarette, and engine room. A large sofa and flexible seating arrangements make this area both practical and inviting.

#### Foredeck

---

Designed for relaxation, the foredeck boasts a generous sunbathing area with comfortable fixed sunbeds.

#### Accommodation

---

- Three guest cabins: one double, one twin (side by side), and one twin (convertible to double).
- Additional convertible sofa-bed in the salon for extra guests.

#### Salon

---

The salon is both spacious and elegant, featuring a large U-shaped beige leather sofa to starboard with a foldable central table, and a double beige leather sofa to port. A TV and Bose surround sound system create the perfect ambiance for entertainment. Forward, a raised tea table with leather seating on either side leads to the elevated bridge, equipped with double plotters and excellent visibility. Large hull windows flood the space with natural light and offer stunning views.

#### Galley

---

Located forward of the salon, the galley is bathed in natural light and equipped with a standard fridge/freezer, dishwasher, and all the amenities of a modern apartment.

#### Guest Cabins

---

- Master Cabin (Bow): En suite with a centreline double bed, ample closets, and natural light from large hull windows and a deck skylight. Natural wood and beige upholstery create a warm, inviting atmosphere.

- Starboard Twin Cabin: Convertible to a double bed, with en-suite access, wardrobe, TV, and abundant natural light from large hull windows.
- Port Twin Cabin: Side-by-side layout, closet, TV, and expansive hull windows.

## Day Head

---

Conveniently accessed through the galley, the day head is ideally positioned for guest use.

## Navigation and Electronics

---

### Interior bridge main deck salon

---

- Double E90-W Raymarine touchscreen navigation plotters
- Raymarine ST60 + tridata for depth, speed, and log
- Raymarine 6002 Smartpilot autopilot
- Raymarine 240E VHF Radio
- Raymarine electronic Radar
- Bennett trim tabs position angle display
- Side Power bow thruster joystick
- Cummins electronic double throttle with sync and neutral options
- Double analogue RPM clocks connected to engine computer
- Oil pressure engine/gear box, cooling temperature, fuel tank analogue watches
- Ritchie magnetic compass
- Power assisted electric hydraulic steering

### 24V Control switches to:

---

- Trim tabs
- Window wipers
- Water pump to window wipers
- Anchor windlass
- Side windows
- Battery bridge
- Navigation and anchor lights
- Engine cooling fan
- Fresh water
- Horn navigation reading light
- Alarm control station
- Engine/Service battery status display

### Flybridge

---

- Large Raymarine E140W touchscreen electronic plotter
- Raymarine ST60+ tridata for depth, speed and log
- Upgraded Raymarine autopilot control
- Raymarine 240E DSC VHF radio
- Bennett trim tabs angle display
- Quick chain counter
- Side Power bow thruster electronic joystick

- Cummins electronic control double throttle
- Electronic engine ignition controls
- Electronic switches to trim tabs-anchor chain cleaning jet-horn
- Analogue watches for RPM, oil pressure, engine temperature
- 12V socket
- WIFI-Bluetooth Fusion music system with Fusion speakers
- Silva Sweden magnetic compass
- Electro hydraulic power assisted steering
- Comfortable beige leather pilot seat

## Electrical Systems

---

- KOHLER 11EEFOZD 11KW 220V generator sound shielded and silenced exhaust
- Service Battery 6x 12V Fulmen Xtrem 12V set up in parallel with 24V and 300Ah output
- Engine Battery 4x 12V Exide AGM in parallel for a 24V 200AH output
- 32A shop repower cable
- All in one Charge Master Plus battery charger 24v/60A-3
- Victron Energy 12V/10A charger for generator battery
- 220v sockets throughout the yacht
- Circuit breakers on all circuits, 24v and 220v
- Earth leakage safety trip
- Underwater transom lights

## Entertainment Equipment

---

- Premium Fusion Bluetooth music system with in Salon, cockpit and flybridge
- Bose surround speakers in salon
- Fusion speakers in cockpit and flybridge
- Flat screen Samsung TV's to all cabins and salon
- Starlink high speed internet!
- Underwater lights

## Galley and Laundry

---

- Incredibly luminous galley
- Natural wood throughout
- Schott Ceran 3 hob electrical cooker
- LG microwave/grill
- Livio portable ice maker
- Smeg espresso coffee machine
- Russel Hobs kettle
- Dometic dishwasher
- Isotherm fridge and freezer
- Hoover washer/dryer in lazarette
- Hot/cold water tap
- Single stainless steel sink

## Deck and Tenders

---

- Williams jet tender 285.
- Teak-laid cockpit, bathing platform and flybridge steps (New 2025!)
- Reversible electric anchor winch with foredeck, main helm and flybridge controls
- Stem head roller with automatic anchor launch and retrieve
- Self-stowing 20kg Delta anchor with 60m of 10 mm chain
- Deck hatch access to chain locker
- Bow rope stowage locker
- Freshwater anchor wash
- Side boarding to both sides
- Stainless steel bow and stern fairleads
- Stainless steel bow, stern and spring cleats
- Stainless steel pulpit and guard rails
- Stainless steel coach roof and flybridge handrails
- Foredeck escape hatch
- Main exterior upholstery in sky leather beige
- Foredeck sunbathing area
- Teak coffee table to fly bridge seating area
- Electric horns
- Fuel fillers on both sides
- Water fillers.
- Waste water deck extraction dock.

## Engine Room

---

- Twin Cummins QSC 8.3 600HP main engines (132hrs @ Dec 2025), with VZ V drive gear boxes.
- 11KW 220V Kohler generator @ 950hr on December 25
- Cruisair 16.000BTU air conditioning compressors.
- Quick water heater
- 4x Rackor fuel filters
- Service and Engine batteries
- Victron and Master volt battery chargers
- Engine room soundproofed
- High volume air intakes
- Engine room extractor fan with electronic time delay
- Engine exhaust silencers and water-cooled exhausts
- Engine beds integrally moulded with hull for strength and vibration absorption
- Forward and aft engine room bulkheads integrally bonded
- Engines flexibly mounted
- Automatic fire extinguisher with remote override control
- Automatic and manual bilge pumps
- 4-bladed propellers in nickel aluminium bronze
- High speed balanced rudders
- Cathodic protection for stern gear
- Stern gear, engines, fuel tanks etc all electrically bonded
- Engine room lighting

- Engine room access hatch and ladder
- Dripless self-aligning shaft seals

## Fuel and Water

---

### Fuel tanks

---

- 2000l single fuel tank
- Double entry refuelling ports
- 4x Rackor fuel filtering water separator filters with alarms

### Water tanks

---

- 600 single tank fresh water tank
- Ultra silent 24v centrifugal fresh water pump
- Fresh water outlets in galley, bathrooms, bathing platform, lazarette and self-cleaning anchor chain
- Quick hot water with double heating source via engine coolant and electrical
- Cold/Hot water at galley, bathrooms, and bathing platform

## Safety Equipment

---

- Seago Cruiser liferaft for 8 people
- ACR EPIRB
- Remote controlled engine room fire extinguisher
- 2kg Imnasa fire extinguishers in all cabins
- 8 x VG automatic life jackets
- Raymarine DSC VHF Radio

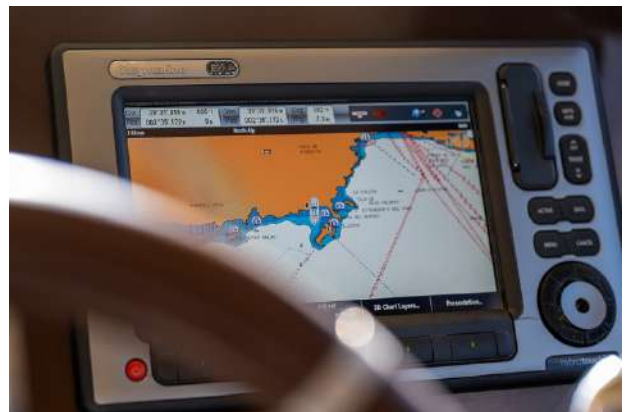
### Disclaimer

---

The Company offers the details of this vessel in good faith but cannot guarantee or warrant the accuracy of this information nor warrant the condition of the vessel. A buyer should instruct his agents, or his surveyors, to investigate such details as the buyer desires validated. This vessel is offered subject to prior sale, price change, or withdrawal without notice.

Arrival Yachts SL  
C/. Benito J. Feijoo 2  
Local 8 , Puerto Portals  
07181, Calvia  
Mallorca, Spain

**T** +34 638 904 040  
**F** +34 691 755 115  
**E** info@arrivalyachts.com  
www.arrivalyachts.com



Arrival Yachts SL  
C/. Benito J. Feijoo 2  
Local 8 , Puerto Portals  
07181, Calvia  
Mallorca, Spain

**T** +34 638 904 040  
**F** +34 691 755 115  
**E** info@arrivalyachts.com  
www.arrivalyachts.com



Arrival Yachts SL  
C/. Benito J. Feijoo 2  
Local 8 , Puerto Portals  
07181, Calvia  
Mallorca, Spain

**T** +34 638 904 040  
**F** +34 691 755 115  
**E** info@arrivalyachts.com  
www.arrivalyachts.com



Arrival Yachts SL  
C/. Benito J. Feijoo 2  
Local 8 , Puerto Portals  
07181, Calvia  
Mallorca, Spain

**T** +34 638 904 040  
**F** +34 691 755 115  
**E** info@arrivalyachts.com  
www.arrivalyachts.com



Arrival Yachts SL  
C/. Benito J. Feijoo 2  
Local 8 , Puerto Portals  
07181, Calvia  
Mallorca, Spain

**T** +34 638 904 040  
**F** +34 691 755 115  
**E** info@arrivalyachts.com  
www.arrivalyachts.com